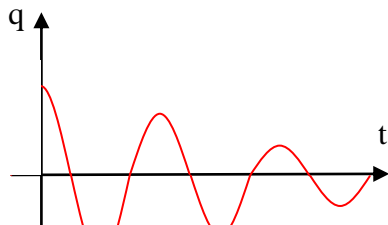
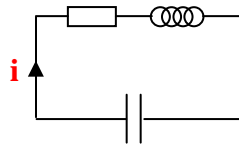
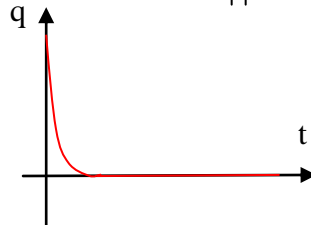


OSCILLATIONS LIBRES RLC

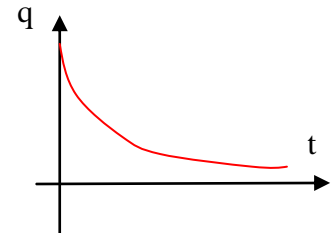
- Oscillations dans R,L,C :



Régime pseudo-périodique :
 $R < R_C$



Régime critique :
 $R = R_C$



Régime apériodique :
 $R > R_C$

- Oscillations dans L,C ($R = 0$) :

$$\ddot{q} + \frac{q}{LC} = 0$$

$$q(t) = q_m \cdot \cos\left(\frac{2\pi}{T_0} \cdot t + \phi_0\right)$$

$$T_0 = 2\pi\sqrt{LC}$$

$$i = \frac{dq}{dt}$$

$$u = \frac{q}{C}$$

